



PROJECT FIRE ALARM UPGRADE

WEINTENDORF CAMPUS
17840 LARAWAY ROAD
JOLIET, IL 60433

ROMEOWILLE CAMPUS - ALTERNATE BID
1125 ROMEO ROAD (135TH STREET)
ROMEOWILLE, IL 60446

CONSULTANT U.S. SYSTEMS SALES, FPS-UTC CCS
8985 TOWN CENTER PARKWAY
BRADENTON, FL 342002
TEL 630-406-1151

LEGEND - DRAWING SYMBOLS

FACP	EST3 Fire Alarm Control Panel
FAAP	Fire Alarm Annunciator with Microphone
FAA	Fire Alarm LCD Annunciator
F	Addressable Manual Pull Station
SD	Addressable Smoke Detectors
HD	Addressable Heat Detector
DSD	Addressable Duct Smoke Detector
DTS	Addressable Duct Smoke Test Station
CR	Addressable Control Relay
WF	Sprinkler Waterflow Switch
TS	Sprinkler Valve Tamper Switch
FPC	Fire Pump Controller
AV	Speaker Strobe
V	Strobe
A	Trumpet Speaker
X	Sub-Note X - Remove Devise
N	Sub-Note N - New Devise

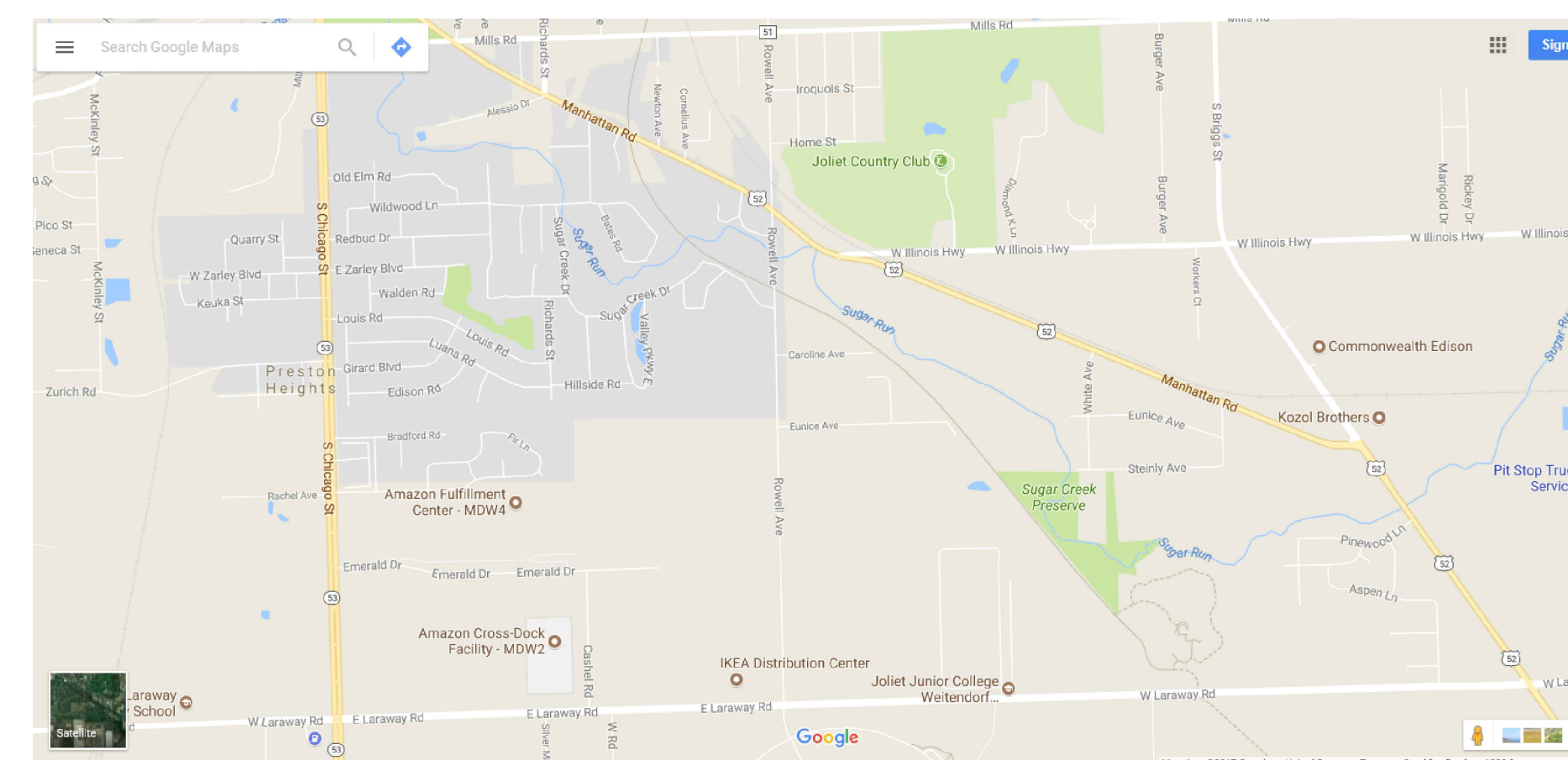
DRAWING INDEX

FA1	Cover Sheet - Drawing Symbols and General Notes
FA2	Weitendorf Campus - Fire Alarm Floor Plan
FA3	Romeoville Campus - Fire Alarm Floor Plan-Alternate Bid

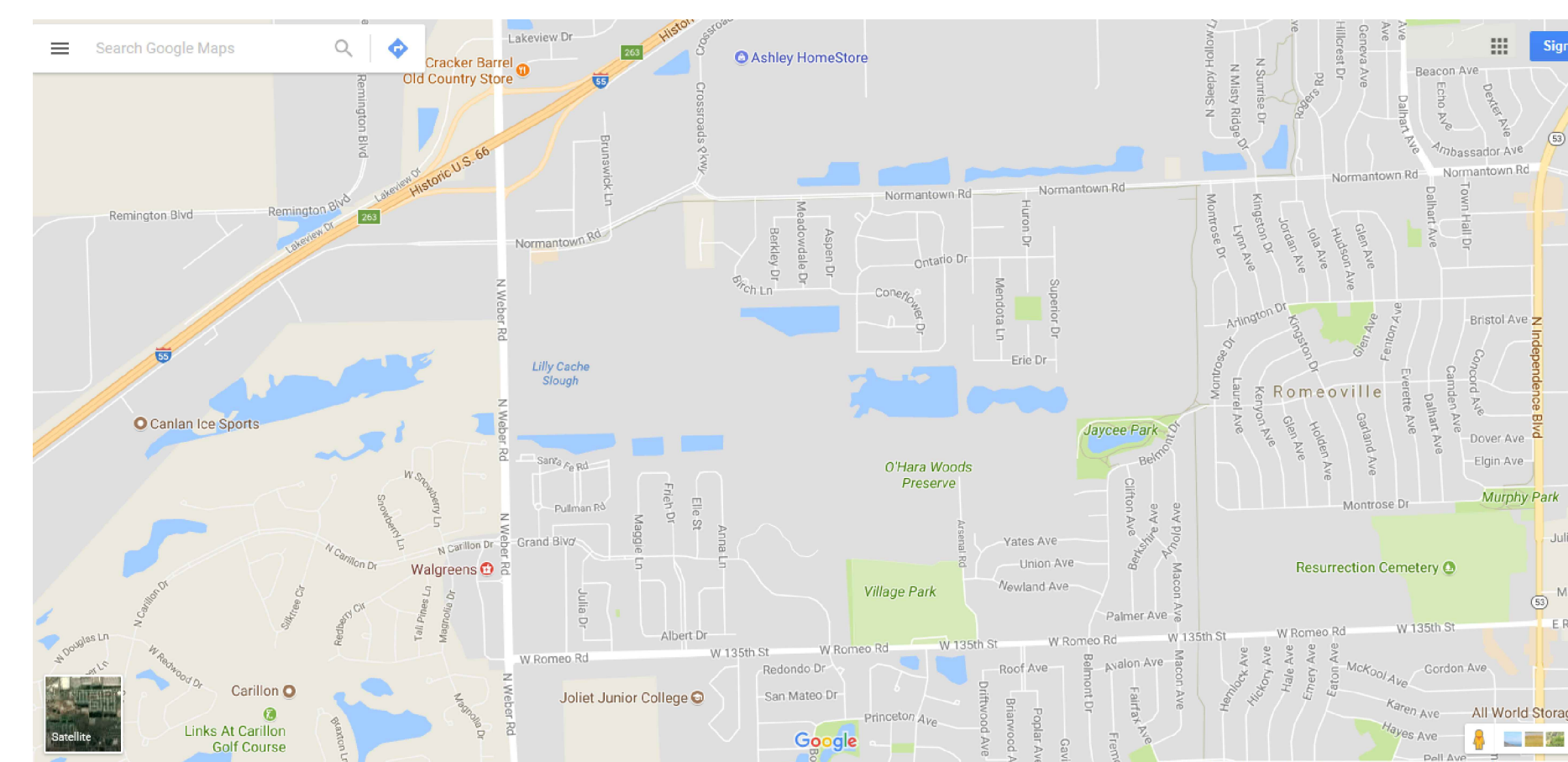
GENERAL NOTES

- For construction documents refer to Fire Alarm and Voice Communications specification section 16721
- Refer to individual drawings for notes related to each project.
- The campus was surveyed using existing as built drawings and fire alarm points list as a guide to locate the devices to be included in the contractors bid.
- As some devices are in confined spaces or otherwise inaccessible and could not be accessed, they may not have been readily visible or shown on existing drawings.
- All the devices shown on the drawings are existing locations to be replaced with new type as shown.
- Romeoville Campus - The existing strobe devices are being changed to combination Speaker-Strobes. Add speakers to entire building and removing all Horns.
- It shall be the contractors responsibility to maintain an accurate up to date set of marked up drawings so that any missing or mis-located devices can be updated on the final drawings .

LOCATION MAPS



Weitendorf Campus Map
NTS



Romeoville Campus Map
NTS

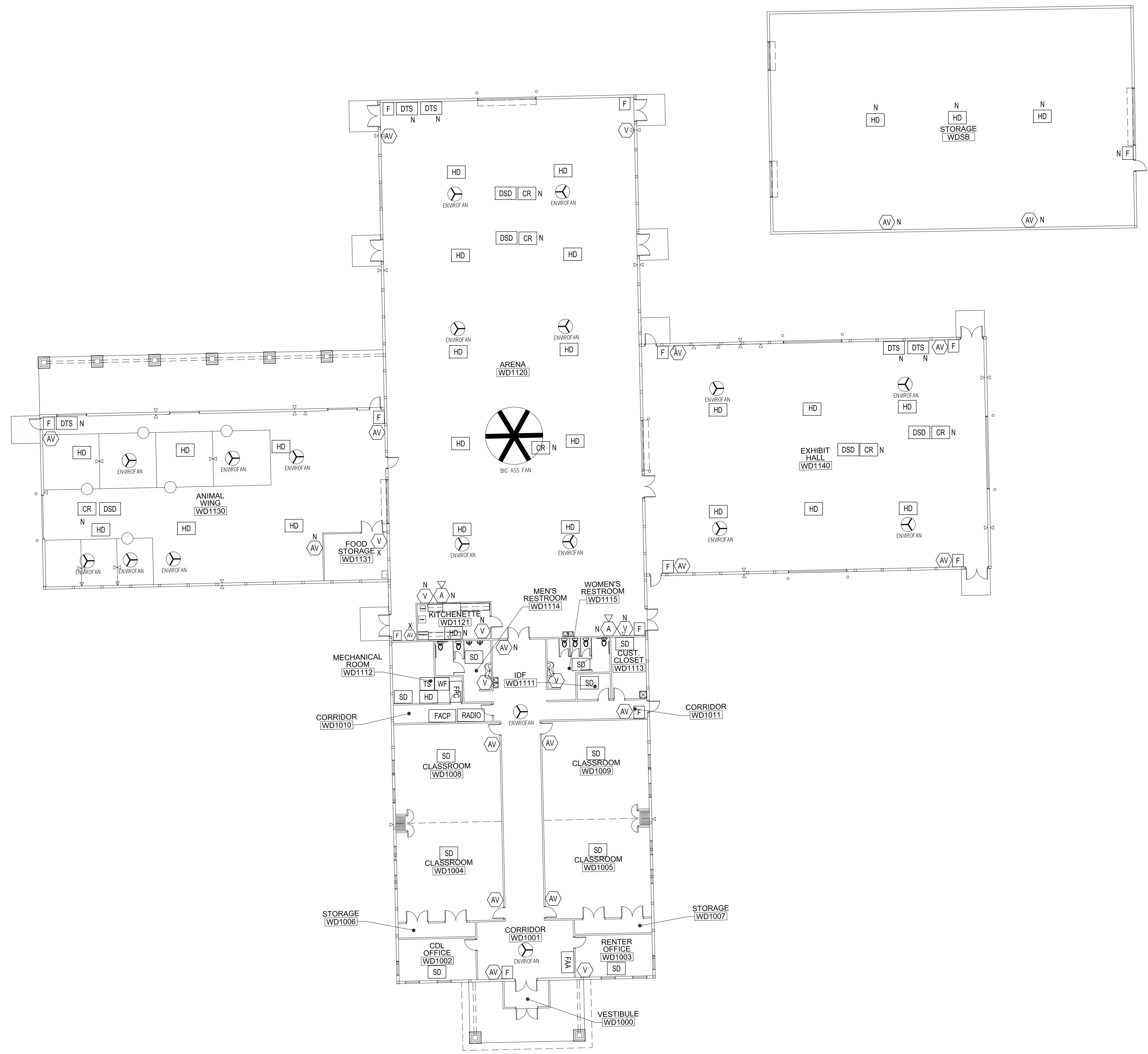
No.	Revision/Issue	Date



MAIN CAMPUS
1215 HOUBOLT RD.
JOLIET, IL 60431

FIRE ALARM SYSTEM UPGRADE
COVER SHEET

Project	JJC-18-763	Sheet	FA1
Date	9/29/17	Scale	
Scale	NTS		



WEITENDORF BUILDING FIRST FLOOR PLAN
SCALE: 1/16"=1'-0"

General Notes

1. For construction documents refer to Fire Alarm and Voice Communications specification section 16721
2. Refer to page FA1 for general notes, symbols and site locations.
3. Monitor Fire Pump
 - 3.1. Run
 - 3.2. Fall
 - 3.3. AC Reversal
4. Monitor Water Tank
 - 4.1. Riser
 - 4.2. Tank

No.	Revision/Issue	Date



MAIN CAMPUS
1215 HOUBOLT RD.
JOLIET, IL. 60431

FIRE ALARM SYSTEM UPGRADE
WD - BUILDING

Project JJC-18-763	Sheet FA2
Date 9/29/17	
Scale 1/16"=1'-0"	

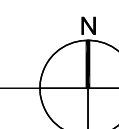
General Notes

1. For construction documents refer to Fire Alarm and Voice Communications specification section 16721
2. Refer to page FA1 for general notes, symbols and site locations.



ROMEOVILLE RMA BUILDING FIRST FLOOR PLAN

SCALE: 1/16" = 1'-0"



No.	Revision/Issue	Date



MAIN CAMPUS
1215 HOUBOLT RD.
JOLIET, IL 60431

FIRE ALARM SYSTEM UPGRADE
RMA - BUILDING

Project JJC-18-763	Sheet FA3
Date 9/29/17	
Scale 1/16"=1'-0"	